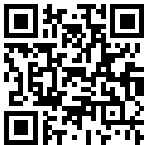


Sink Diade

Kitchen Sinks

Code: 3028 850



DETAILS

Edge/Installation Type	Undermount
Material	AISI 304 stainless steel
Texture	Brushed in line
Finish	Foster brushed
Base	90 cm
Width	80 cm
Dimensions	800 x 440 mm
Bowl dimension	760 x 400 mm
Built-in hole	<a href="#">View technical data sheet</a>

Standard fittings	Fixing hooks, drain, overflow and siphon, boxed packing
-------------------	---

Mixer holes	No standard holes
-------------	-------------------

Drainer	No
---------	----

Number of bowls	1 bowl
-----------------	--------

Waste fitting	3,5" drain
---------------	------------

## FEATURES

Basket 3,5" waste fitting	The drain is equipped with a large 3.5" drain, with the practical basket cap that prevents the discharge of solid parts.
---------------------------	--

Deep bowls	This bowls reach an important depth, over 20 cm, thanks to the advanced production technology, that can be offer great capieny and practicity in all the washing operations.
------------	--

High thickness	1mm thick steel. A significant thickness, which guarantees the maximum sturdiness and durability.
----------------	---

MOULDED BOTTOM	The moulded bottom guarantees perfect water flow and facilitates cleaning operations thanks to the perimeter step with sloping walls.
----------------	---

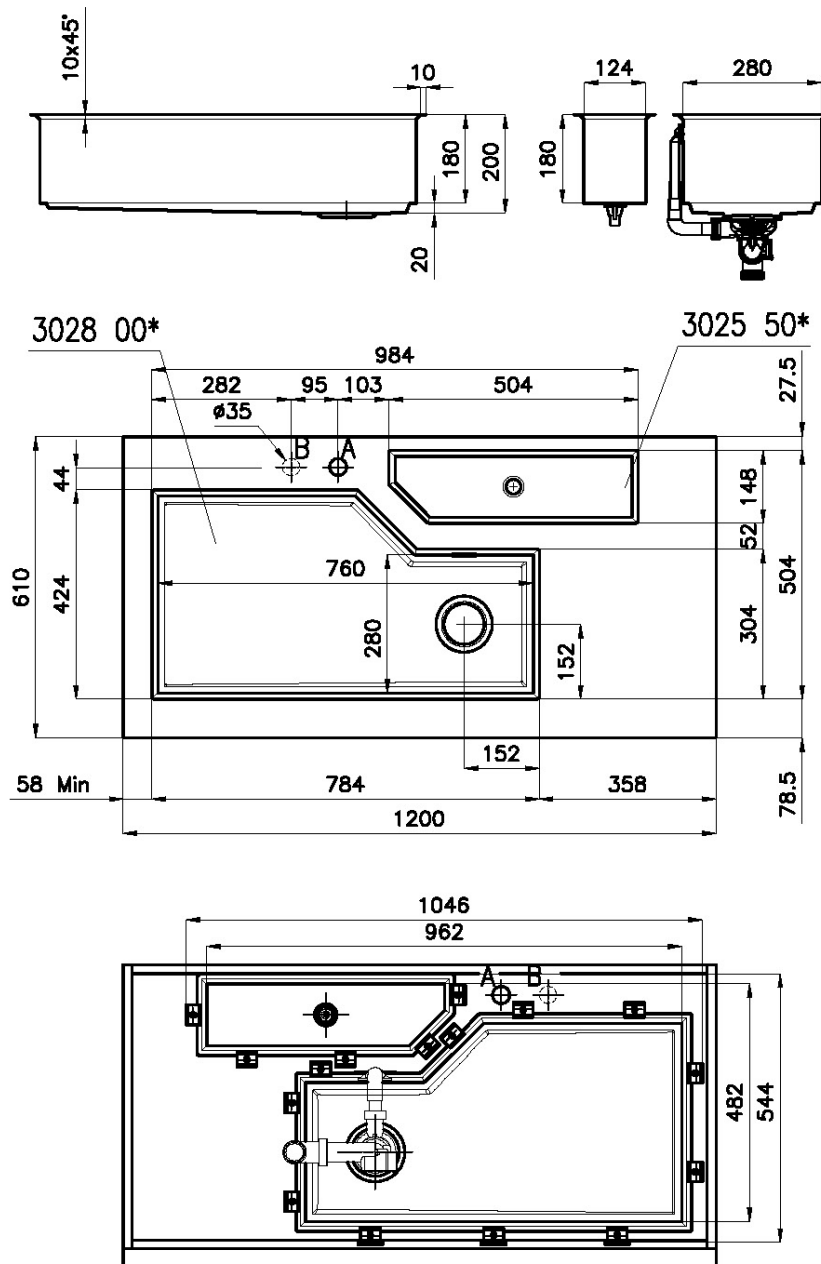
Perimetral overflow	The overflow is always a security on the Foster sinks that prevents the overflow of water in case of oversights. The perimeter drain solution improves aesthetics thanks to its square and essential shape.
---------------------	---

Save space system	Drain and siphon are designed to leave as much space as possible in the under-sink area, more and more useful today for theseparate waste collection systems.
-------------------	---

Space waste fitting	The elegant SPACE steel cap closes the drain and leaves no visible residues collected in the basket below. Space also has a small footprint and allows the optimal use of the under-sink compartment.
---------------------	---



## Sottotop/Under-mount Base 120 | 120 Cabinet



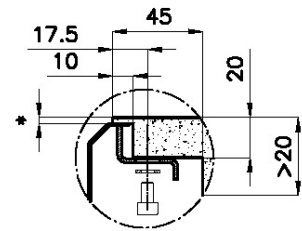
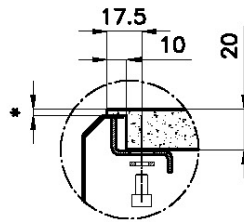
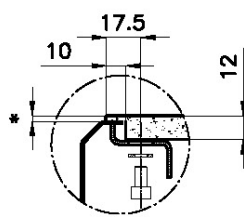
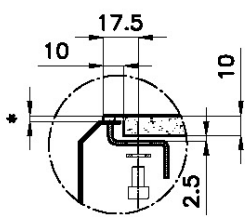
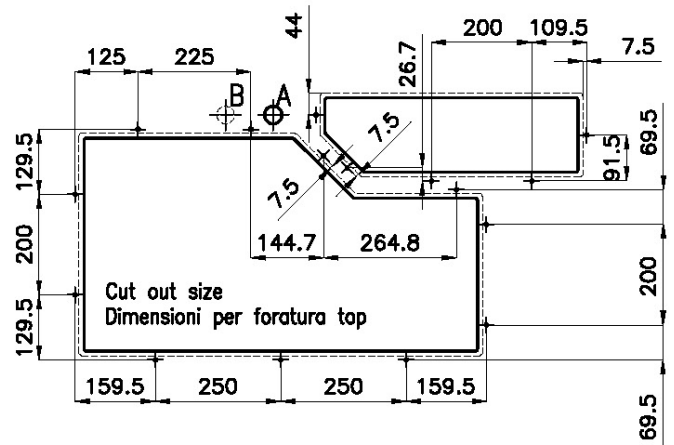
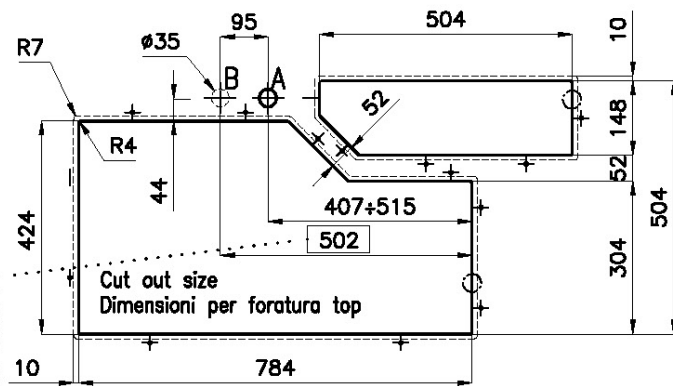
A: Foro Mix/Mixer tap cut-out

B: Foro comando automatico piletta/Automatic waste-fitting command cut-out



## Sottotop/Under-mount Base 120 | 120 Cabinet

Cut out size  
Dimensioni per foratura top



Quota max per pileta automatica / Max quote for automatic drain

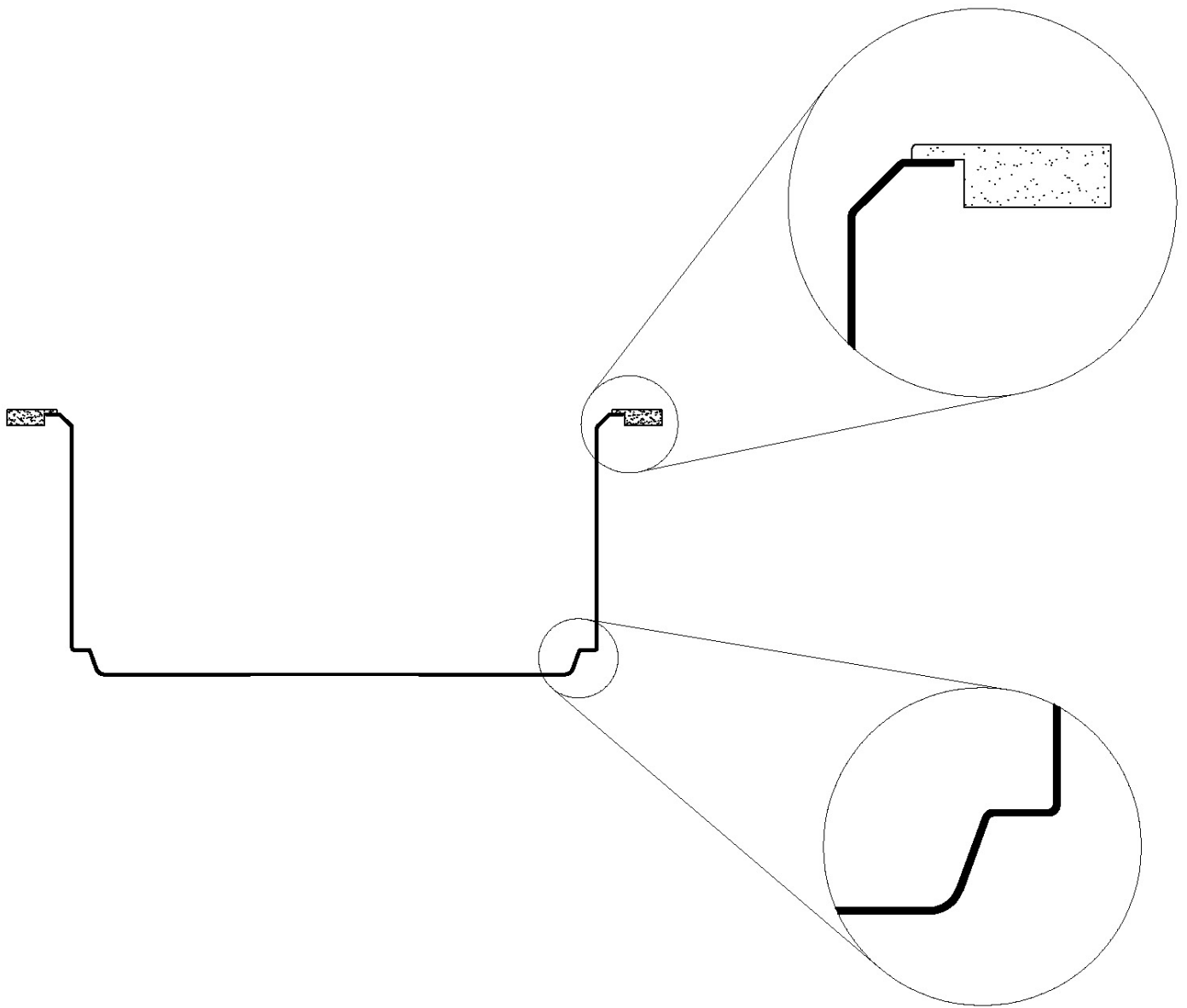
\*lo spessore minimo deve essere valutato in base alla resistenza del materiale

\*Minimum thickness must be evaluated in reference to the material's resistance

sink thickness/spessore acciaio

1

## SOTTOTOP



## GALLERY



## EQUIPMENT



**Black multifunction chopping board**

8100 608

## OPTIONAL ACCESSORIES



**Stainless steel perforated tray**

8151 001



**Black lid**

8151 005



**Stainless steel colander**

8151 010



**Iroko-wood round chopping board**

8642 005

## RECOMMENDED PAIRINGS



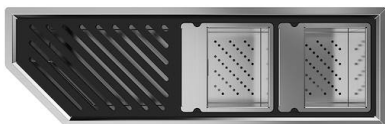
**VOLTA**  
8491 100



**Dispenser Evo Satin**  
8520 100



**Diade equipped troughs**  
8100 800



**Diade equipped troughs**  
8100 801



**Diade equipped troughs**  
8100 802

## OPTIONAL AUTOMATIC WASTE FITTINGS



**Space Push automatic waste fitting**  
- PP  
8407 116